



制冷装置用容器

VESSEL FOR REFRIGERATION EQUIPMENT

专注品质 创国内品牌第一
科技创新 为客户创造价值

南京金典制冷实业有限公司
NANJING JINDIAN REFRIGERANT INDUSTRY Co.,Ltd.



公司简介 About Us

南京金典制冷实业有限公司位于南京市溧水经济开发区，与宁杭高速、机场高速、沿江高速互通，距南京禄口国际机场仅16公里，交通便捷，区位优势明显。公司具备D1、D2级压力容器制造和设计资格并于2006年3月顺利通过了ISO9001：2000质量管理体系认证，专业研制、生产壳管式热交换器。公司于2015年与世界著名换热器公司意大利ONDA公司形成全球战略合作伙伴关系，为金典走向世界注入了强劲的技术力量。

公司始终把高效、洁净、安全、耐用及客户配套方便作为公司产品设计的出发点。主要产品有壳管式水冷冷凝器、壳管式水冷蒸发器、储液器、油冷却器、气液分离器、海水冷凝器等制冷装置用换热器和压力容器，单机制冷量范围由3冷吨到500冷吨。公司紧紧围绕市场占有率高的知名品牌谷轮、比泽尔、汉钟压缩机的使用特点，设计了与之配套使用的标准化、系列化壳管式热交换器，以满足

不同企业的需求。产品广泛应用于水冷冷水机组、水源热泵机组、低温冷冻机组、工业冷水机、风冷冷水（热泵）机组等大型中央空调和商用空调领域、食品冷藏冷冻、船用冷藏、冷干机市场及恒温控制领域。

公司拥有数控机床、数控胀管器、数控弯管机、自动焊机、性能测试台等专用设备以及喷丸房，焊材库，油漆房等，确保产品从下料到成型的各道工序的优良制造。同时，公司建有国内一流的高效铜管生产基地，确保了产品的质量（返修率小于0.12%）与交期（6-8天）。

金典公司立志创造中国名牌，走向世界。

公司的发展离不开新老客户的支持，公司的努力和发展也期待着新老客户的见证。



About Us

Nanjing Jindian Refrigerant Industry Co., Ltd. (the "Company") is a specialised manufacturer of pressure vessels led by a strong and professional Management. Our modern and well equipped factory with a site area of 20,000m² is situated in Lishui Industrial Park. To our West is the Nanjing Lukou International Airport and to our East, is the Nanjing South Railway Station, the largest railway hub in China. We are also well connected by road with easy access to the Ningbo–Hangzhou Expressway, the Airport Expressway and the Yanjiang Expressway.

In 2006 the Company received its D1, D2 Class Pressure Vessel Manufacturing license (and successfully reviewed in 2009). In March of the same year, the Company received its ISO9001:2000 quality management system certification. The Company is committed to its 7s management framework and quality control systems to service its clients with only the most reliable and high quality products.

In 2015, we established a strategic partnership with Onda of Italy, a Global Leader in the design and manufacturing of Heat Exchanges – Shell and Tube, Air Cooled and Brazed Plate.

Our factory is fully equipped with automated welding centers, X–ray and ultrasonic testing equipments, numerical control cutting machines, CNC drilling machines, CNC tube expanders and other specialised manufacturing equipment.

We currently employ over 100 staff and in addition we have a team of 30 specialised technicians trained in chemical equipment, machinery manufacturing, refrigeration and welding equipments.

Our core products are shell and tube condensers, evaporators,

oil cooled condenser, sea water cooled condenser, heat recovery and heat transfer equipment, liquid receivers, oil separators and gas–liquid separators. Refrigeration cooling capacities range from 3 RT to 500 RT.

The Company's design philosophy is to provide our clients with an efficient, clean, safe and durable product with a delivery time of between 6 to 8 days.

The Company promotes the use of standardized, serialized shell and tube heat exchangers in line with market leaders such as Copeland, Bitzer and Hanbell, to better meet the needs of different users.

Our products are widely used in water–cooled chillers, water source heat pumps, low–temperature liquid cooling units, industrial water chillers, air–cooled and air cooled heat pump units and other large scale central air conditioning equipment and commercial air conditioners, cold rooms (freeze and deep freeze), marine use refrigeration, cold air drying machines and temperature control for manufacturing of molds.

Our "Jingong" series of Products is widely used in the Chinese domestic market and has been exported to Japan, Korea and other South East Asian countries.

Our core values are "Quality, Efficiency, Innovation, Pragmatism". We believe that working together with our peers in the industry in a spirit of "Honesty" and "Trust" we will be able to further promote the development of the refrigeration industry.

产品展示

Products Exhibition



外置油分离器



二次油分离器



高效油分离器



气液分离器



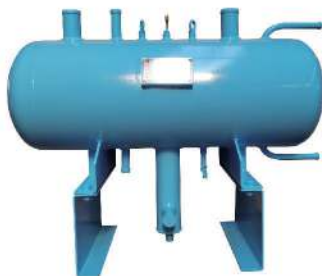
立式储液器



卧式储液器



虹吸罐



低压循环桶



经济器

CONTENTS 目录

JGOSVA系列外置油分离器 JGOSVA Series External Oil Separator	01
JGOSVB系列二次油分离器 JGOSVB Series Secondary Oil Separator	04
JGOSVC系列卧式油分离器 JGOSVC Series Horizontal Oil Separator	05
OSV系列高效油分离器 OSV Series Oil and Gas Separators	06
JGOSVD系列储油式油分离器 JGOSVD Series Oil Storage Separator	07
JGVSA系列气液分离器 JGVSA Series Gas-liquid Separator Accumulator	09
JGVSH系列回热气液分离器 JGVSH Series Backheating Gas-liquid Separator	10
JGRVA系列立式储液器 JGRVA Series Vertical Reservoir	11
JGRHA系列卧式储液器 JGRHA Series Horizontal Reservoir	12
JGHX系列虹吸罐 JGHX Series Siphon Tank	13

JGOSVA系列外置油分离器
JGOSVA Series External Oil Separator

JGOSVA系列油分离器多用于并联式螺杆机组，也可用于单台螺杆机组，油气混合气体沿内桶与外桶之间的环形通道进入油分离器中，油滴通过离心力的作用被分离出，沿桶壁流入油分离器底部油收集区，内桶装有丝网除雾器捕获雾状油雾，使微小油滴相互碰撞并吸附在丝网上形成大的油滴，靠重力作用落入油收集区。

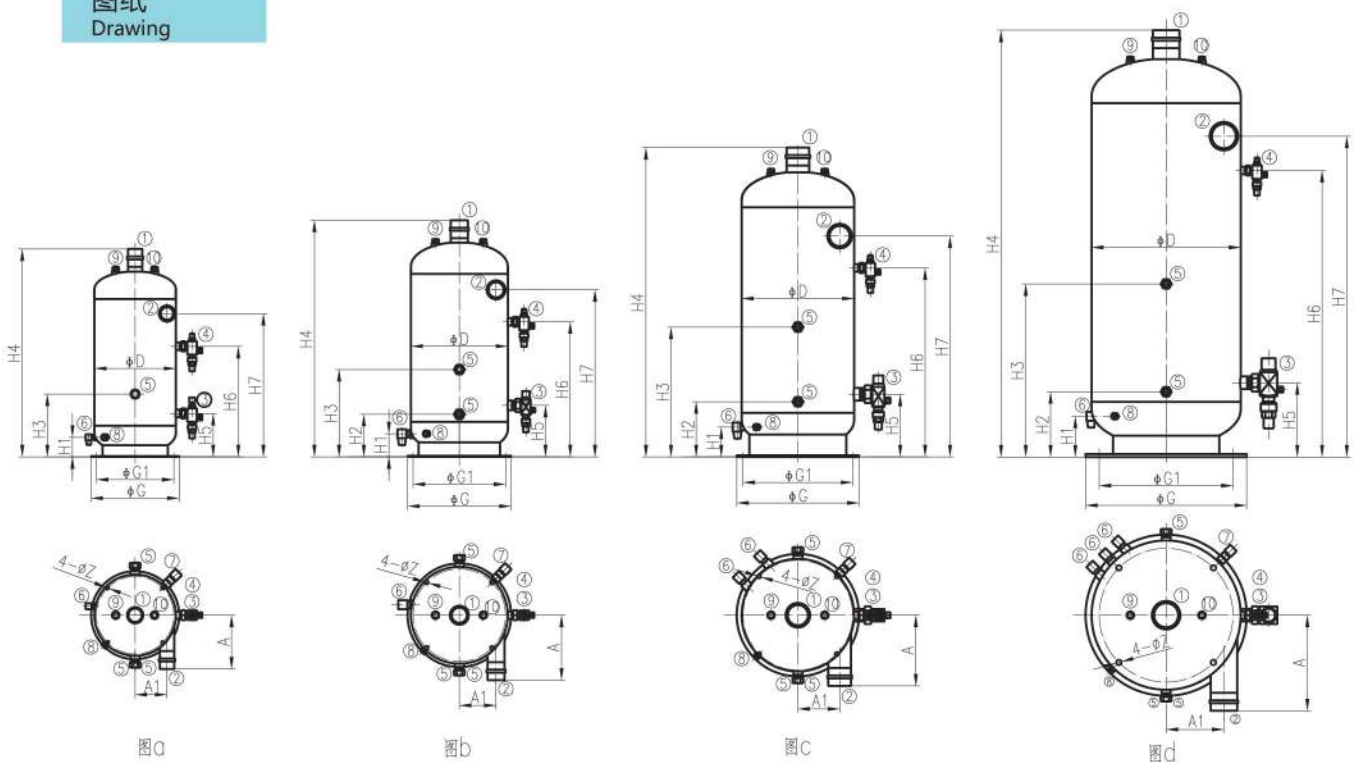
JGOSVA series oil separators are mostly used in parallel screw units or single screw units. Oil-gas mixture enters the oil separator along the annular passage between the inner barrel and the outer barrel. Oil droplets are separated by centrifugal force, and flow into the oil collection area at the bottom of the oil separator along the barrel wall. The inner barrel is equipped with wire mesh demister to capture the mist and make the tiny oil droplets collide and adsorb each other. Large oil droplets are formed on the silk screen and fall into the oil collection area by gravity.

内桶下部设有隔离屏，防止已落入油收集区的油被带走。

The lower part of the inner barrel is provided with an isolation screen to prevent the oil that has fallen into the oil collection area from being taken away.

JGOSVA 系列外置油分离器连接位置 JGOSVA Series External Oil Separator Connection Positions

1	冷媒出口 Refrigerant outlet
2	冷媒进口 Refrigerant inlet
3	油出口 Oil outlet
4	注油口 Conn.for oil charging.valve
5	视液镜 Oil level sight
6	油加热器接口 Conn.for oil heater
7	光电油位开关接口 Conn.for oil level monitoring
8	油温传感器接口 Conn.for oil temperature sensor
9	检修阀接口 Conn.for check valve
10	安全阀接口 Conn. for safety valve

图纸
Drawing


JGOSVA系列外置油分离器

JGOSVA Series External Oil Separator

JGOSVA系列外置油分离器技术参数 JGOSVA Series External Oil Separator Technical Data

	JGOSVA29	JGOSVA50	JGOSVA88	JGOSVA127	JGOSVA240
储油容积 Max.oil charge (L)	10	18	38	52	98
Total volume (L)	29	50	88	127	240
冷媒进口尺寸 Refrigerant inlet (mm)	Φ42 (BW)	Φ57 (BW)	Φ76 (BW)	Φ76 (BW)	Φ89 (BW)
冷媒出口尺寸 Refrigerant outlet (mm)	Φ42 (BW)	Φ57 (BW)	Φ76 (BW)	Φ76 (BW)	Φ89 (BW)
油出口 Oil outlet (mm)	Φ16(ODS)	Φ22(ODS)	Φ28(ODS)	Φ28(ODS)	Φ42(ODS)
油加热器功率 Oil heater	140W×1	300W×1	300W×2	300W×2	300W×3
油加热器输入 Oil heater	1P/220V/AV				
ΦD(mm)	273	325	377	426	512
H1(mm)	65	77	100	105	137
H2(mm)	—	142	185	189	219
H3(mm)	210	292	435	474	580
H4(mm)	696	792	1012	1128	1430
H5(mm)	145	172	210	219	249
H6(mm)	370	452	633	765	946
H7(mm)	480	559		864	1075
A(mm)	186	217	237	247	320
A1(mm)	105	125	140	160	194
ΦG(mm)	295	350	410	440	540
ΦG1(mm)	260	298	368	380	470
ΦZ(mm)	12	13	13	14	18
图例 Flg	a	b	c	c	d

JGOSVA系列外置油分离器
JGOSVA Series External Oil Separator
JGOSVA系列外置油分离器选型
JGOSVA Series External Oil Separator Selection schem for oil separator

型号 Model	低温工况：蒸发温度 Condition Te=-30℃;Tc=40℃			中温工况：蒸发温度 Condition Te=-15℃;Tc=40℃			高温工况：蒸发温度 Condition Te=5℃;Tc=38℃		
	压缩机理论排气量 Compressor displacement VH(m ³ /h)	制冷量 Capacity (KW)	体积流量 volume flow (m ³ /h)	压缩机理论排气量 Compressor displacement VH(m ³ /h)	制冷量 Capacity (KW)	体积流量 volume flow (m ³ /h)	压缩机理论排气量 Compressor displacement VH(m ³ /h)	制冷量 Capacity (KW)	体积流量 volume flow (m ³ /h)
JGOSVA 29	100	25	13	100	50	23	100	99	40
	140	35	19	140	70	32	—	—	—
	180	47	25	180	93	42	—	—	—
	200	49	26	—	—	—	—	—	—
	230	64	34	—	—	—	—	—	—
	260	66	35	—	—	—	—	—	—
JGOSVA 50	300	78	42	200	98	45	140	138	55
	310	82	44	230	127	58	—	—	—
	340	92	49	—	—	—	—	—	—
JGOSVA 88	370	99	53	260	131	60	180	183	73
	410	107	57	300	154	70	200	193	77
	470	130	70	310	163	74	230	250	100
	510	136	73	340	182	83	260	258	104
JGOSVA 127	550	153	82	370	197	90	300	304	122
	580	163	87	410	212	97	310	321	129
	620	169	90	470	258	118	340	359	144
	710	197	105	510	270	123	—	—	—
JGOSVA 240	930	261	140	710	390	178	470	510	204
	1020	294	157	790	420	192	510	538	216
	1130	329	176	830	462	211	550	590	236
	—	—	—	—	—	—	580	638	256

1、设计压力：2.4MPa.

Design pressure:2.4MPa

2、油分离器是为不带油分离器的螺杆压缩机和并联式制冷机而设计的，也可用于其它中低温冷水机组。

Oil separators are designed for screw compressors and parallel refrigerators without oil separators. They can also be used for other medium and low temperature water chillers.

3、油分离器是以离心式特点的高效油分离器，分离器中设有不锈钢丝网除雾器捕获油雾并使油雾碰撞、聚集吸附在丝网上变成油滴，靠重力作用落入油收集区。

Oil separator is a highly efficient oil separator with centrifugal characteristics. The separator is equipped with stainless steel wire mesh mist eliminator to capture oil mist and make oil mist collide, aggregate and adsorb on the wire mesh into oil droplets. It falls into the oil collection area by gravity.

4、以上参数基于R22，本产品也可适用于R134a、R404A、R407C、R507A，具体选型可与本公司联系。

The above parameters are based on R22. The product can also be applied to R134a, R404A, R407C, R507A. The specific selection can be contacted with our company.

JGOSVB系列二次油分离器

JGOSVB Series Secondary Oil Separator

JGOSVB系列二次油分离器为离心叶片式油分离器，进入油分离器的油气顺着导向叶片呈螺旋状流动，在离心力的作用下使排气中的油滴分离出来，沿外桶内壁流入油收集区，内桶装有丝网除雾器捕获雾状油雾，使微小油滴相互碰撞并吸附在丝网上形成大的油滴，靠重力作用落入油收集区，蒸汽经出气管引出。

JGOSVB series secondary oil separator is a centrifugal vane oil separator. The oil vapor entering the oil separator flows spirally along the guide vane. Under the action of centrifugal force, the oil droplets in the exhaust gas are separated and flow into the oil collection area along the inner wall of the outer barrel. The inner barrel is equipped with a wire mesh mist eliminator to capture the mist oil mist, which makes the tiny oil droplets collide with each other and adsorb on the wire mesh to form large oil droplets. The force falls into the oil collection area and the steam is drawn out through the outlet pipe.

内桶下部设有隔离屏，防止已落入油收集区的油被带走。

The lower part of the inner barrel is provided with an isolation screen to prevent the oil that has fallen into the oil collection area from being taken away.

JGOSVB系列二次油分离器技术参数 JGOSVB Series Secondary Oil Separator Technical Data

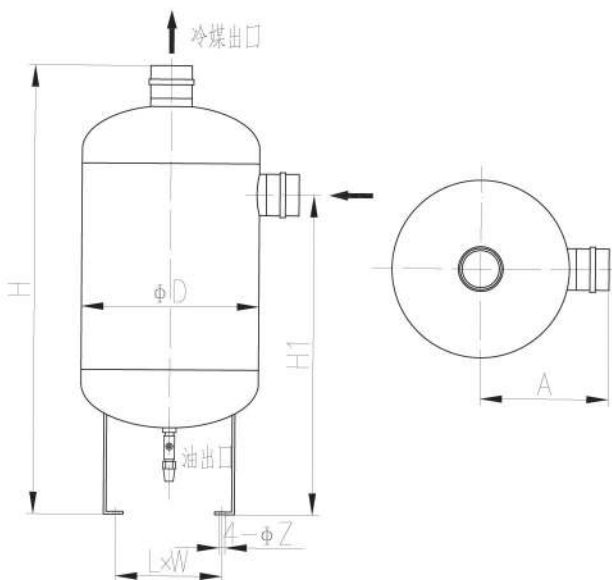
型号 Model	JGOSVB26	JGOSVB41	JGOSVB59	JGOSVB80	JGOSVB123	JGOSVB188
总容积 Total volume (L)	26	41	59	80	123	188
冷媒进口尺寸 Refrigerant inlet (mm)	Φ57 (BW)	Φ76 (BW)	Φ89 (BW)	Φ89 (BW)	Φ108 (BW)	Φ140 (BW)
冷媒出口尺寸 Refrigerant outlet (mm)	Φ57 (BW)	Φ76 (BW)	Φ89 (BW)	Φ89 (BW)	Φ108 (BW)	Φ140 (BW)
油出口 Oil outlet (mm)	3/8" (SAE)	3/8" (SAE)	3/8" (SAE)	3/8" (SAE)	3/8" (SAE)	3/8" (SAE)
ΦD (mm)	273	325	377	462	512	616
H (mm)	753	812	865	805	972	1036
H1 (mm)	530	576	616	525	626	645
A (mm)	213	225	262	302	360	415
L×W (mm)	126×105	195×105	195×105	275×190	275×190	275×190
ΦZ (mm)	11	11	11	14	14	14
排气量 Displacement(m³/h) Condition Te=-25°C;Tc=40°C	290	500	650	1200	1600	2500
排气量 Displacement(m³/h) Condition Te=5°C;Tc=40°C	180	400	450	900	1190	2000

1、设计压力：2.4MPa。
Design pressure:2.4MPa

2、以上参数基于R22冷媒，其它冷媒也可参照选型。

The above parameters are based on R22 refrigerant. Other refrigerants can also be selected by reference.

图纸 Drawing



JGOSVC系列卧式油分离器
JGOSVC Series Horizontal Oil Separator

JGOSVC系列卧式油分离器用于满液式螺杆冷水机组，可以使最少量的润滑油进入系统内部，提高系统的换热效率。

JGOSVCseries horizontal oil separator is used in full liquid screw water chiller, which can make the least amount of lubricating oil enter into the system and improve the heat exchange efficiency of the system.

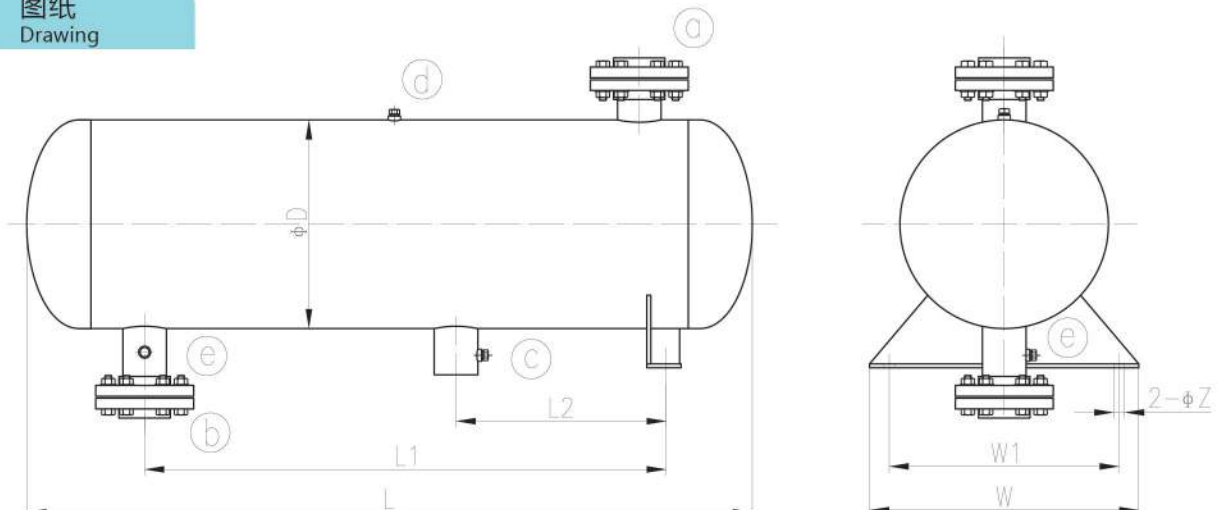
- 设计压力:2.4MPa Design pressure: 2.4Mpa
- 适用冷媒: R22、R134a Applicable refrigerant: R22, R134a

JGOSVC系列卧式油分离器连接位置 JGOSVC Series External Oil Separator Connection Positions

a	冷媒进口 Refrigerant inlet
b	冷媒出口 Refrigerant outlet
c	油出口 Oil outlet
d	安全阀接口 Conn. for safety valve
e	检修阀接口 Conn.for check valve

JGOSVC系列卧式油分离器技术参数 JGOSVC Series External Oil Separator Technical Data

	JGOSVC130	JGOSVC170	JGOSVC300
总容积 Total volume (L)	130	170	300
冷媒进口尺寸 Refrigerant inlet (mm)	Φ57 (BW)	Φ89 (BW)	Φ108 (BW)
冷媒出口尺寸 Refrigerant outlet (mm)	Φ57 (BW)	Φ89 (BW)	Φ108 (BW)
油出口 Oil outlet (mm)	Φ16 (ODS)	Φ22 (ODS)	Φ28 (ODS)
ΦD (mm)	377	426	512
L (mm)	1308	1325	1696
L1 (mm)	850	865	1160
L2 (mm)	300	310	450
W (mm)	490	550	660
W1 (mm)	410	470	560
ΦZ (mm)	18	22	22
Te=5°C; Tc=38°C	470KW	710KW	930KW

图纸
Drawing


OSV高效油分离器系列

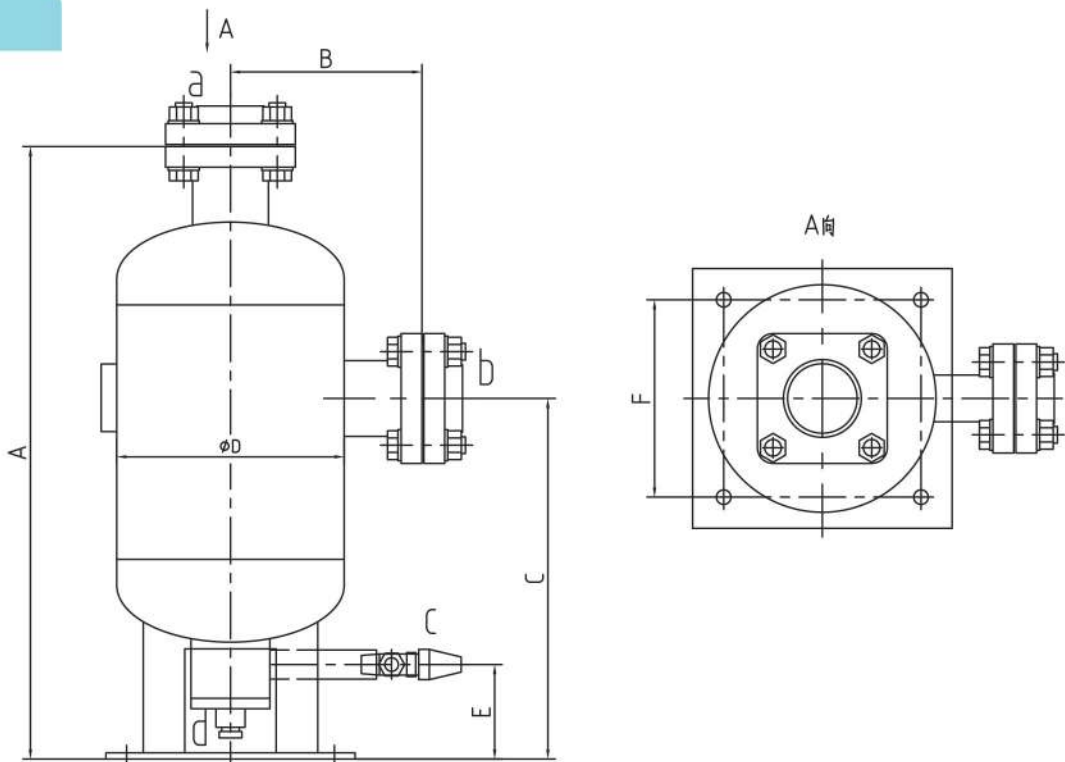
OSV Series Oil and Gas Separators

型号 Model	压缩机型号 Compressor model	质量流量 (kg/h) Displacement	进口a Inlet	出口b Outlet	回油口c Oil Return Inlet	d	A	B	C	D	E	F
OSV-200	RC2-100B	1908	DN40	DN40	Rc3/8	Rc3/8	590	184	347	219	91	190
OSV-200	RC2-140B	2602	DN40	DN40	Rc3/8	Rc3/8	590	184	347	219	91	190
OSV-200	RC2-180B	3413	DN40	DN40	Rc3/8	Rc3/8	590	184	347	219	91	190
OSV-200	RC2-200B	3717	DN40	DN40	Rc3/8	Rc3/8	590	184	347	219	91	190
OSV-310	RC2-230B	4531	DN50	DN50	Rc3/8	Rc3/8	590	184	347	219	91	190
OSV-310	RC2-260B	4973	DN50	DN50	Rc3/8	Rc3/8	590	184	347	219	91	190
OSV-310	RC2-300B	5860	DN50	DN50	Rc3/8	Rc3/8	590	184	347	219	91	190
OSV-310	RC2-310B	6191	DN50	DN50	Rc3/8	Rc3/8	590	184	347	219	91	190
OSV-470	RC2-340B	6774	DN65	DN65	Rc3/8	Rc3/8	590	184	347	219	91	190
OSV-470	RC2-370B	7333	DN65	DN65	Rc3/8	Rc3/8	590	184	347	219	91	190
OSV-470	RC2-410B	8074	DN65	DN65	Rc3/8	Rc3/8	590	184	347	219	91	190
OSV-470	RC2-470B	9607	DN65	DN65	Rc3/8	Rc3/8	590	184	347	219	91	190
OSV-620	RC2-510B	10144	DN80	DN80	Rc3/8	Rc3/8	666	233	351	273	91	270
OSV-620	RC2-550B	11107	DN80	DN80	Rc3/8	Rc3/8	666	233	351	273	91	270
OSV-620	RC2-580B	12027	DN80	DN80	Rc3/8	Rc3/8	666	233	351	273	91	270
OSV-620	RC2-620B	12490	DN80	DN80	Rc3/8	Rc3/8	666	233	351	273	91	270
OSV-790	RC2-710B	14547	DN100	DN100	Rc3/8	Rc3/8	709	253	390	325	95	270
OSV-790	RC2-790B	15975	DN100	DN100	Rc3/8	Rc3/8	709	253	390	325	95	270
OSV-930	RC2-830B	17057	DN100	DN100	Rc3/8	Rc3/8	709	253	390	325	95	270
OSV-930	RC2-930B	19224	DN100	DN100	Rc3/8	Rc3/8	709	253	390	325	95	270

注：表中参数为冷凝温度40℃，蒸发温度+2℃时的质量流量，当用于低温工况时请按照具体的工况下的质量流量进行选取，接管尺寸可根据用户的要求进行更改。

Note: The displacement set out in the table is basis compressor operating environment of condensing temperature 40°C, evaporating temperature 2°C. For low temperature operating environment selection should be based on actual mass flow rate. Connection dimensions can be customized to customer's requirements.

图纸
Drawing



JGOSVD系列储油式油分离器
JGOSVD Series Oil Storage Separator

JGOSVD系列油分离器多用于并联式螺杆机组，也可用于单台螺杆机组，油气混合气体沿内桶与外桶之间的环形通道进入油分离器中，油滴通过离心力的作用被分离出，沿桶壁流入油分离器底部油收集区，内桶装有丝网除雾器捕获雾状油雾，使微小油滴相互碰撞并吸附在丝网上形成大的油滴，靠重力作用落入油收集区。

油分离器下部设有一个储油段，储油段上有一个高位视镜和一个低位视镜，标准油位应在上下油位视镜之间。

Jgosvd series oil separators are mostly used in parallel screw units or single screw units. The oil-gas mixture enters the oil separator along the circular channel between the inner barrel and the outer barrel. The oil drops are separated by centrifugal force, and flow into the oil collection area at the bottom of the oil separator along the barrel wall. The inner barrel is equipped with a wire mesh demister to catch the mist like oil mist, so that the tiny oil drops collide with each other and absorb each other. Large oil drops are formed on the screen and fall into the oil collection area by gravity. There is an oil storage section at the lower part of the oil separator. There is a high level sight glass and a low level sight glass on the oil storage section. The standard oil level should be between the upper and lower oil level sight glasses.

●设计压力:2.4MPa design pressure: 2.4Mpa

●适用冷媒: R22、R134a、R407C、R404A、R507A。Applicable refrigerant: R22, R134a, R407C, R404A, R507a.

JGOSVD系列外置油分离器技术参数 JGOSVD Series External Oil Separator Technical Data

	JGOSVD36	JGOSVD 60	JGOSVD 80	JGOSVD 90	JGOSVD 110	JGOSVD 150	JGOSVD2 40
储油容积 Max.oil charge (L)	6.5	10	15	20	25	35	55
总容积 Total volume (L)	36	60	80	90	110	150	240
冷媒进口尺寸 Refrigerant inlet (mm)	2-1/8 "	2-5/8 "	3-1/8 "	DN65	DN80	DN100	DN125
冷媒出口尺寸 Refrigerant outlet (mm)	2-1/8 "	2-5/8 "	3-1/8 "	DN65	DN80	DN100	DN125
油出口 Oil outlet (mm)	3/8 "	1/2 "	1/2 "	5/8 "	5/8 "	7/8 "	7/8 "
ΦD(mm)	273	325	377	412	462	512	616
H(mm)	790	940	950	980	963	1046	1150
H1(mm)	165	185	215	215	225	235	260
H2(mm)	565	655	660	610	590	640	700
A(mm)	205	260	275	325	340	370	420
ΦG(mm)	295	350	410	440	490	540	640
ΦG1(mm)	260	298	368	380	420	470	530
ΦZ(mm)	14	14	14	14	14	18	18
图例 Flg	a	a	a	b	b	b	b

JGOSVD系列储油式油分离器

JGOSVD Series Oil Storage Separator

JGOSVD系列外置油分离器选型

JGOSVD Series External Oil Separator Selection schem for oil separator

用于活塞、涡旋并联机组时，按下列表参数选型

When it is used for piston and scroll parallel units,
select the type according to the following list parameters

型号 Model	高温工况：蒸发温度 Condition Te=+5°C;Tc=40°C	中温工况：蒸发温度 Condition Te=-10°C;Tc=40°C	低温工况：蒸发温度 Condition Te=-25°C;Tc=40°C	速冻工况：蒸发温度 Condition Te=-40°C;Tc=40
JGOSVD36	378KW	360KW	345KW	330KW
JGOSVD60	410KW	395KW	378KW	360KW
JGOSVD80	490KW	475KW	458KW	440KW

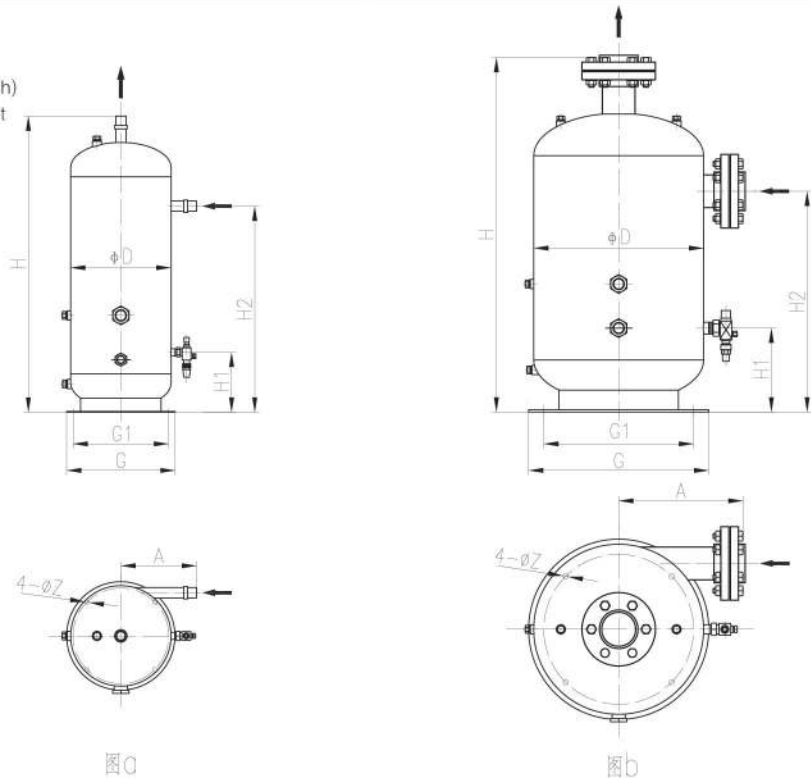
上述参数基于：R22/R407C above parameter based on :R22/R407C
1、使用R407A/R507时，数值×0.85。 1. Use R407A/R507 ,data x0.85
2、使用R134a时，数值×0.75。 2.Use R134a, data x 0.75

用于带内置油分螺杆并联机组时，按下列表参数选型

型号 Model	中高温范围 Condition Te>-10°C;Tc=40°C	低温范围 Condition Te<-15°C;Tc=40°C
JGOSVD36	220	300
JGOSVD60	400	510
JGOSVD80	500	650
JGOSVD90	700	1000
JGOSVD110	950	1300
JGOSVD150	1300	1500
JGOSVD240	2000	2500

- 1、上述参数基于R22。
1. Above data based on R22.
- 2、数值为冷凝温度+40°C时的最大理论排气量(m3/h)
2. Maximum theoretical exhaust value (m3/h) at a condensing temperature of 40 °C
- 3、用于其它制冷剂请与本公司技术部门联系。
3. For other refrigerants, please contact our technical department

图纸
Drawing



图a

图b

JGVSA系列气液分离器
JGVSA Series Gas-liquid Separator Accumulator

制冷装置中安装气液分离器是为了避免蒸发器中没有蒸发完的液态制冷剂进入压缩机产生液击

Gas-liquid separator is installed in refrigeration unit to avoid liquid refrigerant from evaporator entering compressor to produce liquid hammer.

- 垂直安装; Vertical installation;
- 气液分离器应尽量靠近压缩机吸气口; The gas-liquid separator should be as close as possible to the suction port of the compressor.
- 对于并联压缩冷凝机组应选用多吸气管气液分离器, 若需要可与本公司联系; For parallel compression condensing units, multi-suction gas-liquid separators should be selected, and contact the company if necessary.
- JGVSA42、JGVSA85、JGVSA150、JGVSA250设有一个安全阀接口和一个排污阀接口。JGVSA42, JGVSA85, JGVSA150 and JGVSA250 have a safety valve Connection and a sewage valve Connection.

JGVSA系列气液分离器 JGVSA Gas-liquid Separator Series accumulator

型号 Model	容积 Volume (L)	ΦD (mm)	ΦD1 (mm)	ΦD2 (mm)	H (mm)	A (mm)	A1 (mm)	A2 (mm)	A3 (mm)	ΦZ (mm)	对焊钢管尺寸 Butt-jointed steel pipe	安全阀接口 Conn. for safety	图例 Flg
JGVSA8	8	159	162	190	535	80	—	—	—	10	Φ32×3.0	—	a
JGVSA12	12	219	205	250	447	105	—	—	—	10	Φ38×3.0	—	a
JGVSA16	16	219	205	250	543	110	—	—	—	12	Φ45×3.0	—	a
JGVSA24	24	273	260	295	534	128	—	—	—	12	Φ57×3.5	—	a
JGVSA29	29	273	260	295	669	—	43	56	32	12	Φ76×4.0	—	b
JGVSA42	42	325	298	350	789	—	51	66	55	13	Φ89×4.0	3/8" NPT	c
JGVSA85	85	412	380	440	923	—	66	85	49	14	Φ108×4.0	3/8" NPT	c
JGVSA150	150	512	120	350	1058	—	80	96	63	20	Φ133×4.0	3/8" NPT	d
JGVSA250	250	616	120	450	1220	—	103	132	110	20	Φ133×4.0	3/8" NPT	d

1、设计压力:

1.7MPa. Design pressure: 1.7MPa.

2、汽液分离器U形垂直上升管内流速应大于7.5m3/h, 最大流速应小于14m3/h。

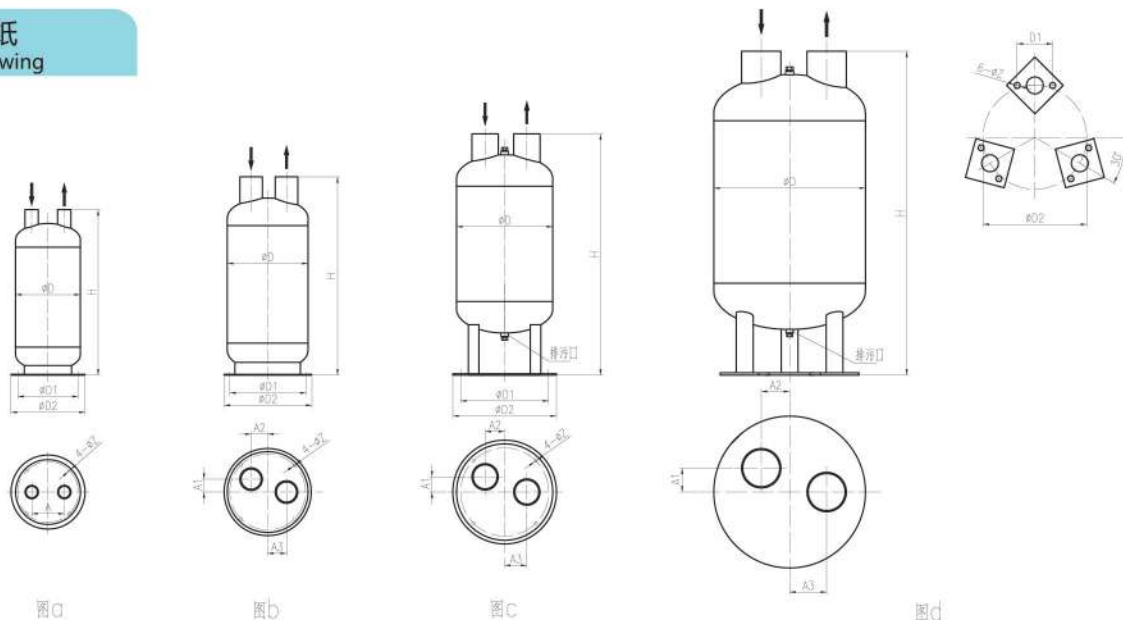
Flow velocity in U-shaped vertical upward tube of vapor-liquid separator should be greater than 7.5m3/h, and maximum flow velocity should be less than 14 m3/h.

3、适用制冷剂: R22、R134a、R407C、R404A、R507C。

Applicable refrigerants: R22, R134a, R407C, R404A, R507C.

4、汽液分离器的贮液量为总容积的50%~70%。

The liquid storage capacity of the vapor-liquid separator ranges from 50% to 70% of the total volume.

图纸
 Drawing


JGVSH系列回热气液分离器

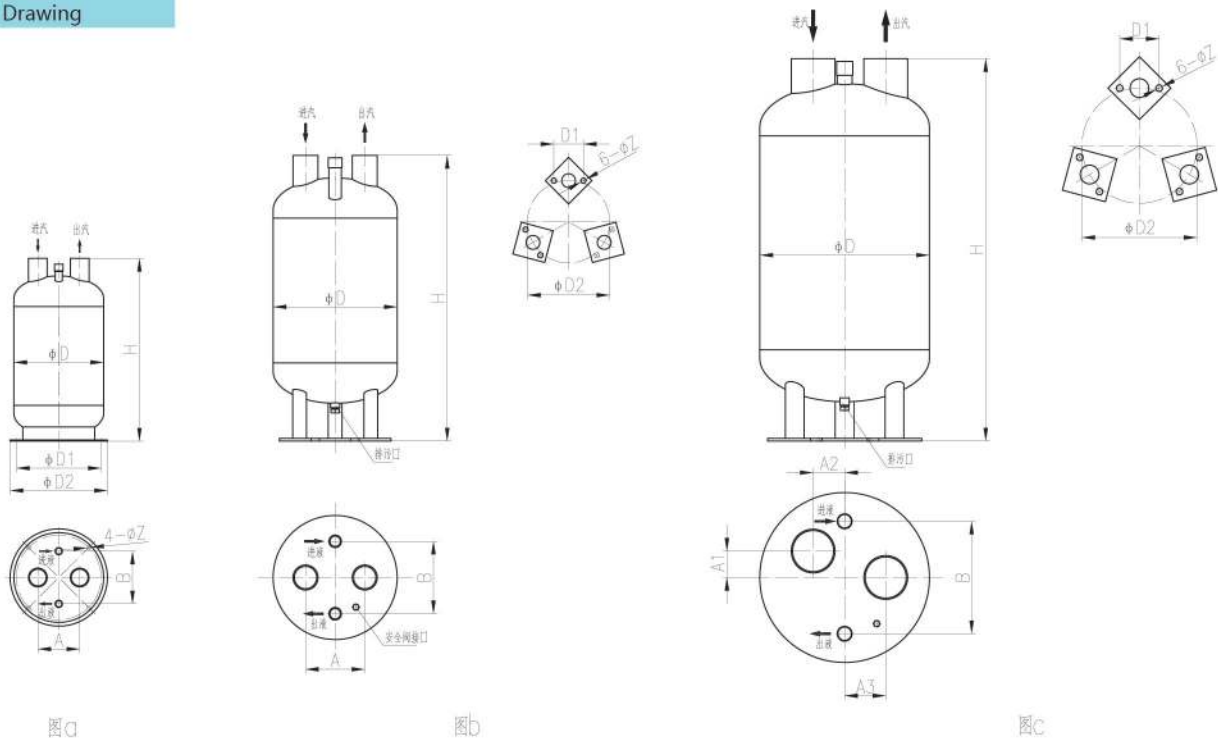
JGVSH Series Backheating Gas-liquid Separator

- 适用于蒸发温度低于-15℃的制冷装置; It is suitable for refrigeration equipment with evaporation temperature below -15 C.
- 液体过冷焓值增加, 气体过热可避免液态制冷剂进入压缩机吸气管; With the increase of enthalpy of liquid supercooling, gas superheating can prevent liquid refrigerant from entering the suction pipe of compressor.
- 低压侧设计压力:1.7MPa; Low pressure side design pressure: 1.7 MPa;
- 高压侧设计压力:2.4MPa; High pressure side design pressure: 2.4 MPa;
- 适用制冷剂: R22、R134a、R407C、R404A、R507C。 Applicable refrigerants: R22, R134a, R407C, R404A, R507C.

JGVSH系列回热气液分离器 Series Regenerator

型号 Model	JGVSB24	JGVSB64	JGVSB125	JGVSB170	JGVSB220	JGVSB280
容积 Volume(L)	24	64	125	170	220	280
换热面积 (m ²)	0.44	0.96	1.0	1.6	1.9	2.35
汽管 Suction Pipe	Φ57×3.5	Φ76×4.0	Φ89×4.0	Φ133×4.0	Φ133×4.0	Φ133×4.0
液管 Liquid Pipe	7/8" ODS	Φ38×3.0	Φ45×3.0	Φ45×3.0	Φ45×3.0	Φ57×3.5
ΦD (mm)	273	377	462	516	566	616
ΦD1(mm)	260	90	120	120	120	120
ΦD2(mm)	295	250	300	350	400	450
A(mm)	125	180	220	-----	-----	-----
B(mm)	160	220	260	340	360	390
A1(mm)	-----	-----	-----	80	70	80
A2(mm)	-----	-----	-----	96	120	140
A3(mm)	-----	-----	-----	125	140	160
ΦZ(mm)	12	12	12	20	20	20
图例 Fig	a	b	b	c	c	c

图纸
Drawing



JGRVA系列立式储液器系列
JGRVA Series Vertical Reservoir
JGRVA系列立式储液器 Horizontal liquid receiver

型号 Model	Volume (L)	ΦD (mm)	ΦD1 (mm)	ΦD2 (mm)	H (mm)	H1 (mm)	H2 (mm)	H3 (mm)	A (mm)	进口 Inlet (mm)	出口 Outlet (mm)	ΦZ (mm)
JGRVA40	40	325	310	345	669	180	180	407	238	1-3/8"	1-3/8"	12
JGRVA60	60	325	310	345	929	180	180	617	238	1-1/2"	1-1/2"	12
JGRVA80	80	377	368	410	934	196	196	615	269	1-1/2"	1-1/2"	13
JGRVA100	100	412	380	440	970	200	200	636	286	1-7/8"	1-1/2"	13
JGRVA150	150	462	420	490	1128	230	230	760	311	Φ60×3.5	1-7/8"	13
JGRVA200	200	512	470	540	1219	240	240	823	336	Φ73×4	Φ60×3.5	14
JGRVA250	250	512	470	540	1476	240	240	1028	336	Φ73×4	Φ60×3.5	18
JGRVA300	300	566	495	590	1478	260	260	1021	363	Φ83×4	Φ73×4	18
JGRVA400	400	616	530	640	1639	280	280	1143	388	Φ83×4	Φ73×4	18

1、设计压力: 2.4MPa.

Design pressure: 2.4MPa.

2、适用冷媒: R22、R134a、R407C、R404A、R507C。

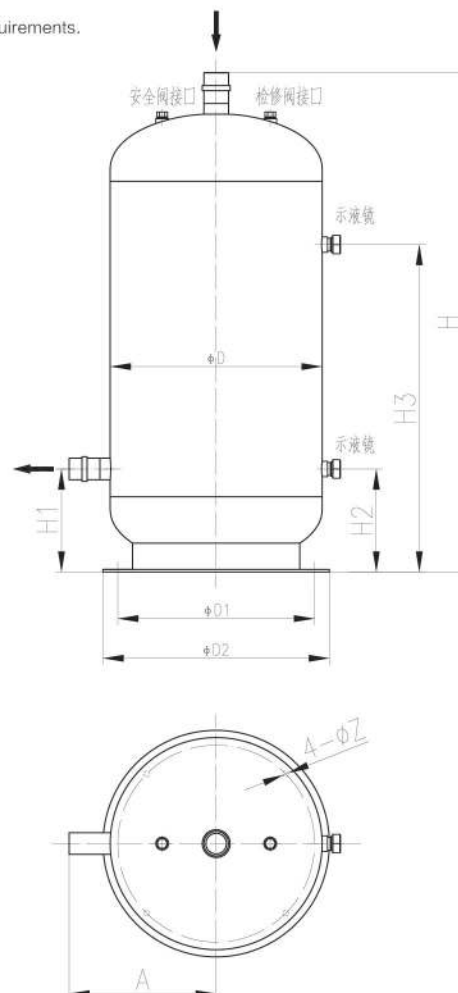
Applicable refrigerants: R22, R134a, R407C, R404A, R507C.

3、本产品配有安全阀接口、检修阀接口、高液位视镜和低液位视镜。

The product is equipped with safety valve interface, repair valve interface, high liquid level mirror and low liquid level mirror.

4、可根据用户要求设置低液位报警器。

Low level alarm can be set up according to user's requirements.

图纸
Drawing


JGRHA系列卧式储液器

JGRHA Series Horizontal Reservoir

JGRHA系列卧式储液器 Horizontal liquid receiver

型号 Model	容积 Volume (L)	ΦD (mm)	L (mm)	L1 (mm)	L2 (mm)	L3 (mm)	W (mm)	W1 (mm)	H (mm)	H1 (mm)	ΦZ (mm)	进口 Inlet (mm)	出口 Outlet (mm)	图例 Flg
JGRHA40	40	219	1230	900	620	900	240	180	348	168	14	1-3/8"	1-3/8"	a
JGRHA60	60	273	1189	800	620	800	300	240	403	196	14	1-1/2"	1-1/2"	a
JGRHA80	80	273	1569	1180	1000	1180	300	240	403	196	14	1-1/2"	1-1/2"	a
JGRHA100	100	325	1358	970	730	970	345	285	462	228	18	1-7/8"	1-1/2"	a
JGRHA150	150	325	2008	1620	1380	1620	345	285	462	228	18	Φ60×3.5	1-7/8"	a
JGRHA200	200	426	1561	1300	850	1300	450	370	558	275	18	Φ73×4.0	Φ60×3.5	a
JGRHA250	250	426	1933	1470	1220	1470	450	370	558	275	18	Φ73×4.0	Φ60×3.5	b
JGRHA300	300	462	1974	1410	1150	1410	480	380	631	310	20	Φ83×4.0	Φ73×4	b
JGRHA400	400	516	2132	1560	1300	1560	540	440	702	356	20	Φ83×4.0	Φ73×4	b
JGRHA500	500	566	2213	1580	1320	1580	590	490	766	383	20	Φ89×4.0	Φ83×4	b

1、设计压力：2.4MPa。

Design pressure: 2.4 MPa

2、适用冷媒：R22、R134a、R407C、R404A、R507C。

Applicable refrigerants: R22, R134a, R407C, R404A, R507C.

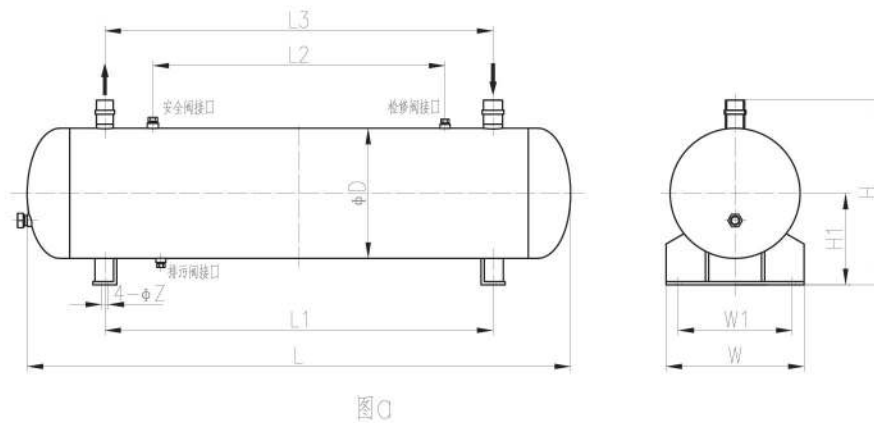
3、本产品配有安全阀接口、检修阀接口、气相平衡接口、排污阀接口、高液位视镜和低液位视镜。

Applicable refrigerants: R22, R134a, R407C, R404A, R507C.

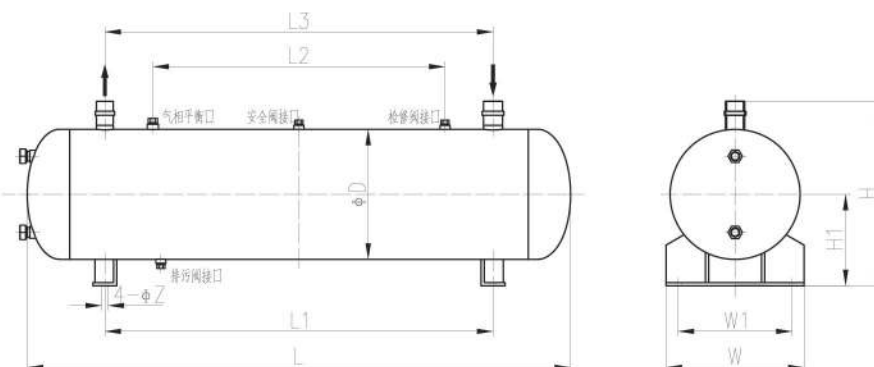
4、可根据用户要求设置低液位报警器。

Low level alarm can be set up according to user's requirements.

图纸
Drawing



图a



图b

JGHX系列虹吸罐
JGHX Series Siphon Tank

压缩机排出的高温高压制冷剂蒸汽经冷凝器冷凝后变成液体，首先进入虹吸罐，在虹吸罐的液体达到溢流口进入贮液器而向蒸发器供液，而虹吸罐溢流口以下的液体经出液口依重力流向压缩机油冷却器，在油冷却器中吸收润滑油的热量后变成气体，经回气口回到虹吸罐。

The high temperature and high pressure refrigerant vapor from compressor discharged by condenses condensing into liquid, First, it enters the siphon tank. The liquid from the siphon tank reaches the overflow port and enters the reservoir and feeds the liquid to the evaporator. The liquid below the overflow port of the siphon tank flows to the compressor oil cooler according to gravity. After absorbing the heat of lubricating oil in the oil cooler, it becomes gas and returns to Siphon Tank through the air return port.

- 设计压力：2.4MPa； Design pressure: 2.4 MPa
- 适用冷媒：R22、R134a、R407C、R404A、R507C。 Applicable refrigerants: R22, R134a, R407C, R404A, R507C

JGHX系列虹吸罐 Series siphon tank

连接口用途 Application Of the conn	a	去储液器接口 To connection liquid receiver
	b	冷却后制冷剂进口 Inlet of the refrigerant after condensation
	c	气化后的制冷剂流回冷凝器进气口 Vaporized refrigerant flow to the gas inlet of condenser
	d	去油冷却器接口 To connection of oil cooler
	e	经油冷却器吸热后制冷剂接口 The refrigerant condensation from oil cooler is adsorbed the heat
	f	气相平衡口 The balance connection of gas
	g	安全阀接口 Spare connection

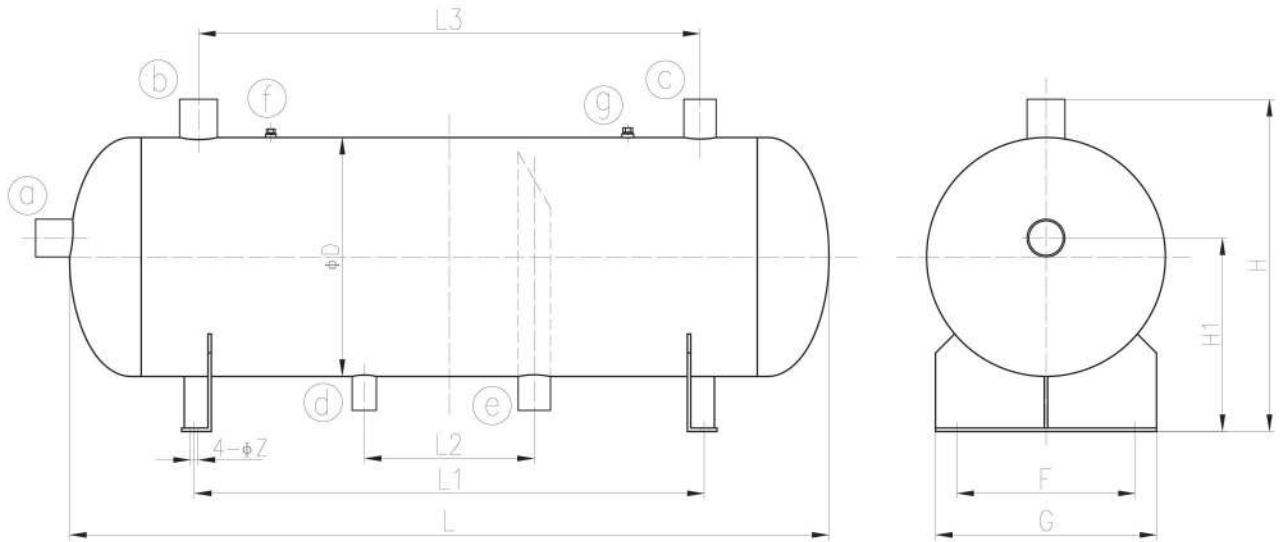
型号 Model	总容积 Total volume (L)	液容积 Liquid volume (L)	ΦD (mm)	L (mm)	L1 (mm)	L2 (mm)	L3 (mm)	H (mm)	H1 (mm)	F (mm)	G (mm)	ΦZ (mm)
JGHX100	100	50	377	1039	680	240	650	558	318	270	350	20
JGHX200	200	100	462	1348	870	300	800	683	400	320	420	20
JGHX400	400	200	562	1787	1200	400	1180	782	455	420	520	20
JGHX600	600	300	616	2241	1600	600	1500	864	510	450	550	20

型号 Model	接口 a Conn.a	接口 b Conn.b	接口 c Conn.c	接口 d Conn.d	接口 e Conn.e	接口 f Conn.f	接口 g Conn.g
JGHX100	Φ57×3.5	Φ57×3.5	Φ45×3.0	Φ38×3.0	Φ45×3.0	3/4" -14	1/2" -14
JGHX200	Φ76×4.0	Φ76×4.0	Φ57×3.5	Φ45×3.0	Φ57×3.5	3/4" -14	1/2" -14
JGHX400	Φ89×4.0	Φ89×4.0	Φ76×4.0	Φ57×3.5	Φ76×4.0	3/4" -14	1/2" -14
JGHX600	Φ108×4.0	Φ108×4.0	Φ89×4.0	Φ76×4.0	Φ89×4.0	3/4" -14	1/2" -14

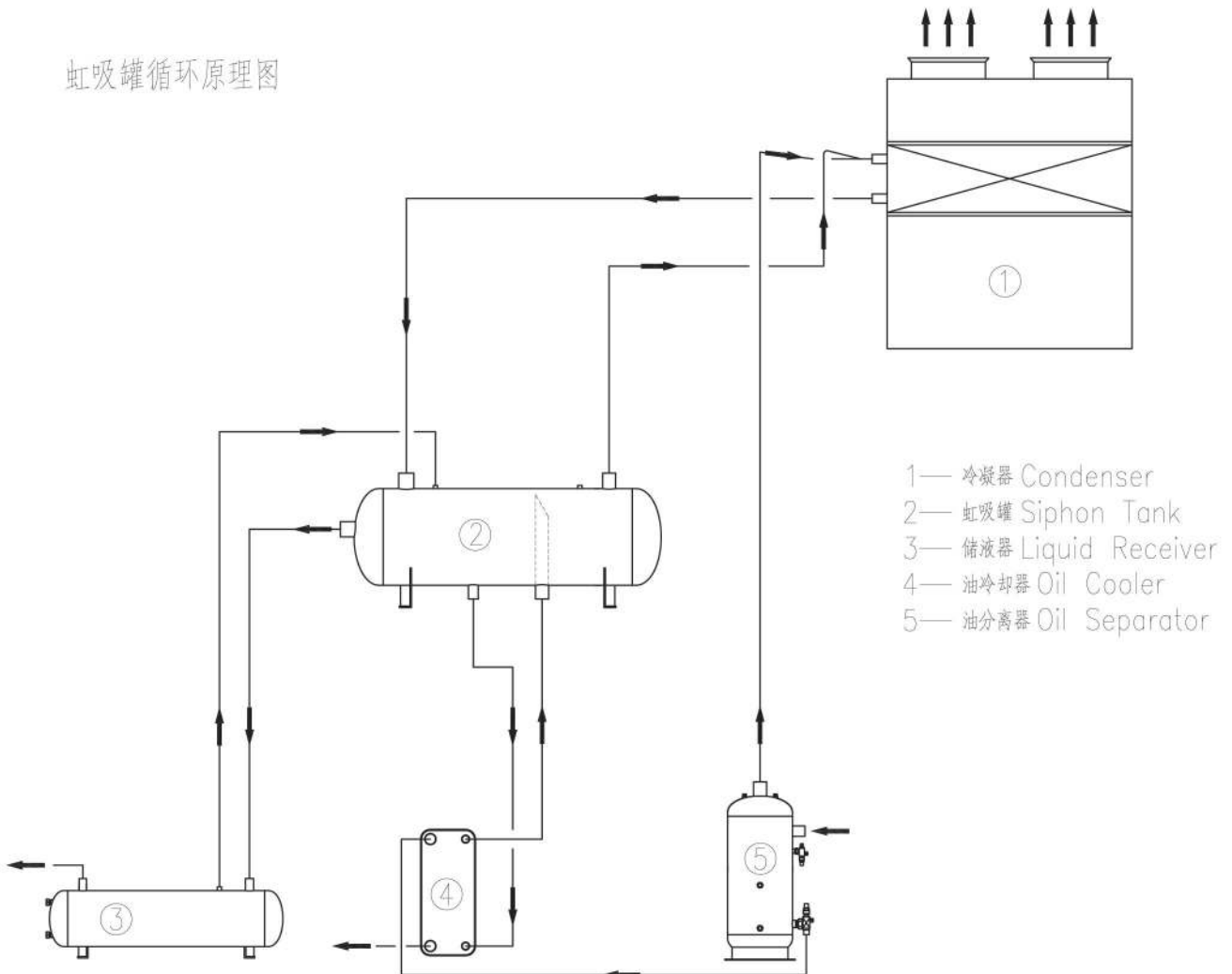
JGHX系列虹吸罐

JGHX Series Siphon Tank

图纸
Drawing



虹吸罐循环原理图



- 1— 冷凝器 Condenser
- 2— 虹吸罐 Siphon Tank
- 3— 储液器 Liquid Receiver
- 4— 油冷却器 Oil Cooler
- 5— 油分离器 Oil Separator

公司主页(Website) : <http://www.njjdzl.com>



扫一扫
加微信

地址：南京市溧水县永阳镇开发区

Add : Yongyang Industrial Park, Lishui, Nanjing, China

邮编 (Zip) : 211200

电话 (Tel) : +86-25-56210175

传真 (Fax) : +86-25-56210179